

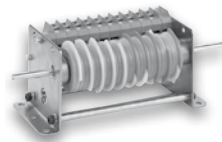
# Cam Timers



- Max. number of contacts
- External drive
- Logarithmic scale
- Quick start cam
- Cam with removable strikers
- Cam with fixed strikers
- Cam-adjustable

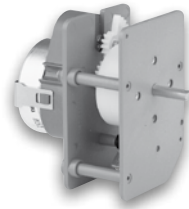
- Mounting:**
- 35 mm DIN rail (EN50022)
  - screw fixing
  - panel-fixing

P01



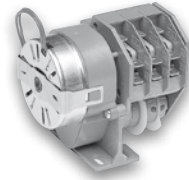
20  
•

P04



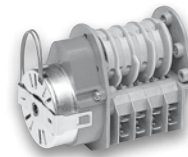
2  
•

P19



5  
•

P20



5  
•

# Cam Timers



- Max. number of contacts
- 2 speeds
- Quick start cam
- Cam with removable strikers
- Cam with fixed strikers
- Cam-adjustable

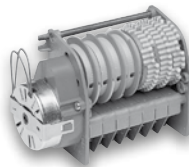
- Mounting:**
- 35 mm DIN rail (EN50022)
  - screw fixing
  - panel-fixing

P24



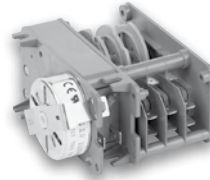
1  
•

P25



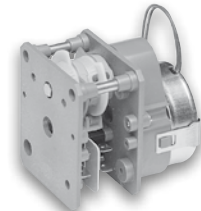
20  
•  
•  
•

P26



5  
•  
•  
•

P34



5  
•  
•

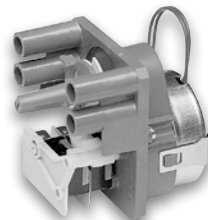
# Cam Timers



- Max. number of contacts
- 2 speeds
- Quick start cam
- Cam with removable strikers
- Cam with fixed strikers
- Cam-adjustable

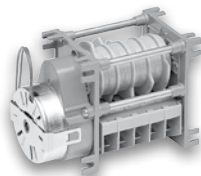
- Mounting:**
- 35 mm DIN rail (EN50022)
  - screw fixing
  - panel-fixing

P36



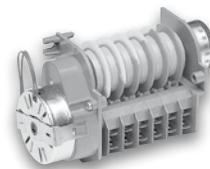
2  
•

P37



5  
•

P38



20  
•  
•