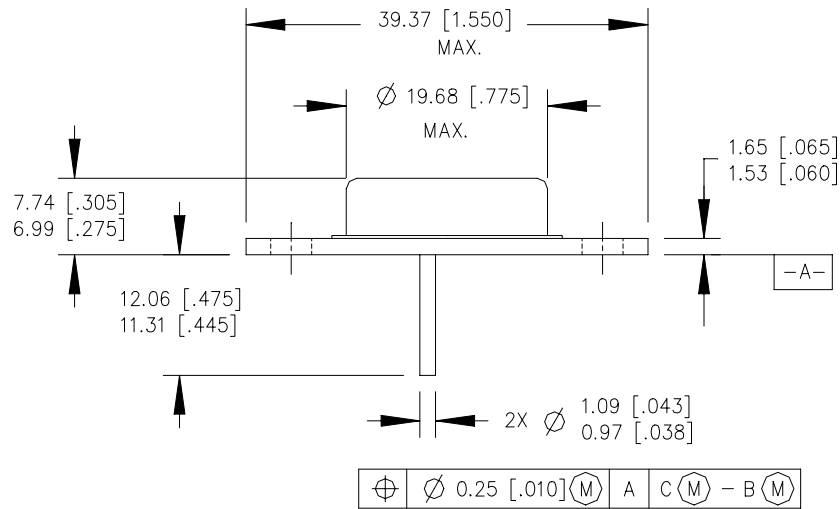


# Case Outline and Dimensions - TO-204AA



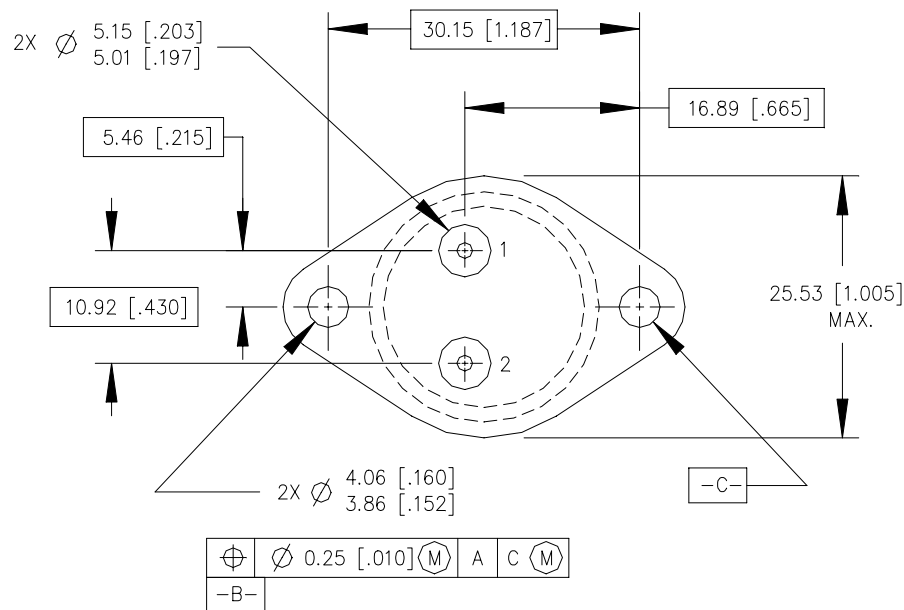
## PIN ASSIGNMENTS

### SCHOTTKY

- 1 - ANODE 1
- 2 - ANODE 2
- 3 - COMMON CATHODE (CASE)

### HEXFET

- 1 - SOURCE
- 2 - GATE
- 3 - DRAIN (CASE)



### IGBT

- 1 - GATE
- 2 - EMITTER
- 3 - COLLECTOR (CASE)

## NOTES:

1. DIMENSIONING & TOLERANCING PER ANSI Y14.5M-1982.
2. CONTROLLING DIMENSION : INCH.
3. DIMENSIONS ARE SHOWN IN MILLIMETERS [INCHES].
4. OUTLINE CONFORMS TO JEDEC OUTLINE TO-204-AA.