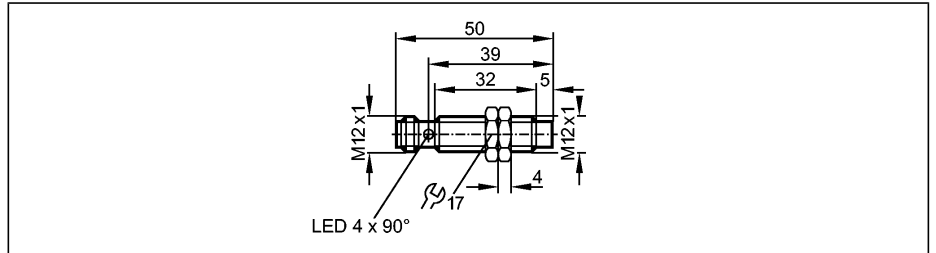


Inductive sensors

IFS201

IFB2007-ARKG/M/US
Inductive sensor
Metal thread M12 x 1
Connector
Increased sensing range
gold-plated contacts

Sensing range 7 mm [nf]
non-flush mountable



Made in Germany



Electrical design	
Output	
Operating voltage	[V]
Current rating	[mA]
Minimum load current	[mA]
Short-circuit protection	
Reverse polarity protection	
Overload protection	
Voltage drop	[V]
Leakage current	[mA]
Real sensing range (Sr)	[mm]
Operating distance	[mm]
Switch-point drift	[% of Sr]
Hysteresis	[% of Sr]
Switching frequency	[Hz]
Correction factors	
Ambient temperature	[°C]
Protection	
EMC	
MTTF	[Years]
Housing materials	
Function display	
Switching status	LED
Connection	
Weight	[kg]
Remarks	
Accessories (included)	

DC PNP/NPN normally open	
	10...30 DC
	100
	2
	pulsed
	yes
	yes
	< 2.5
	< 0.5
	7 ± 10 %
	0...5.7
	-10...10
	3...15
	700
	mild steel = 1 / stainless steel approx. 0.7 / brass approx. 0.5 / Al approx. 0.4 / Cu approx. 0.3
	-25...70
	IP 67, II
EN 61000-4-2 ESD:	4 kV CD / 8 kV AD
EN 61000-4-3 HF radiated:	10 V/m (80...1000 MHz)
EN 61000-4-4 Burst:	2 kV
EN 61000-4-6 HF conducted:	10 V (0.15...80 MHz)
EN 55011:	class B
	2487
	brass white bronze coated; active face: PBT
	yellow (4 x 90°)
	M12 connector; gold-plated contacts
	0.025
	Conventional 3-wire pnp sensors can be replaced. In this case pin 3 (grey in the wiring diagram) is not used.
	2 lock nuts

Wiring

