

FYK SERIES (Single Phase Filters)



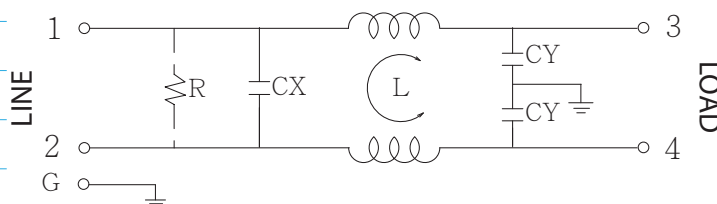
Features

- The FYK series is general purpose single phase filter.
- The rated current can be offered from 1 to 10 amps.
- The compact size for easy installation and space saving.
- Various output selections such as fast-on terminal, and lead wire.
- Low leakage current version upon requested.
- All parts are approved by UL ,CSA ,VDE and CE
- Applications comprising Electrical and electronic equipment, household equipment, Medical equipment, Datacom equipment, Test and measurement equipment, Fitness machine.

Technical Specification

Rated voltage	125/250VAC
Rated currents	1 to 10A
Operating frequency	50/60Hz
Hipot rating(Line-to-line)	1450VDC
Hipot rating(Line-to-ground)	2250VDC
Operating temperature	-25~+85°C
Safety compliance	UL,CSA,VDE,CE

Typical electrical schematic



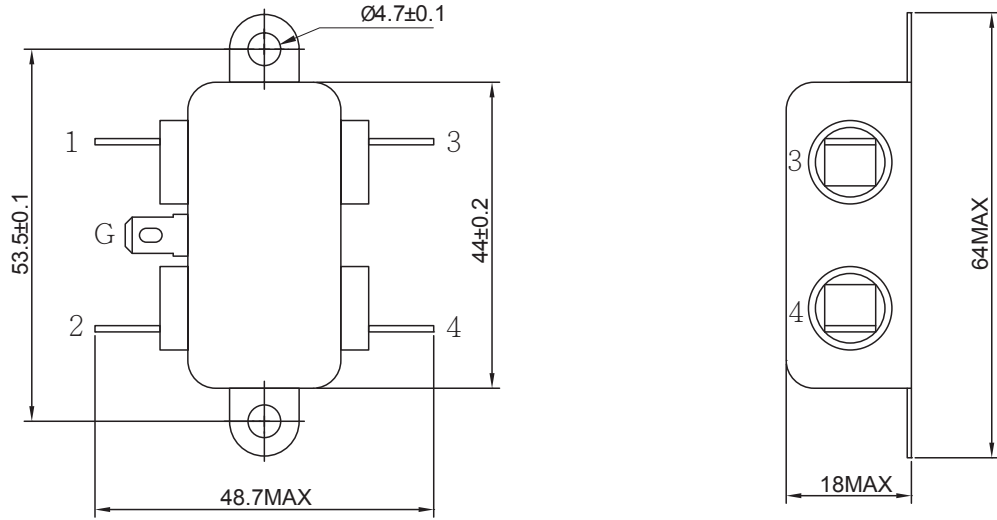
*With optional ground choke and resistor.
R: 1M ohm, 1/4W min.

Filter Selection Table

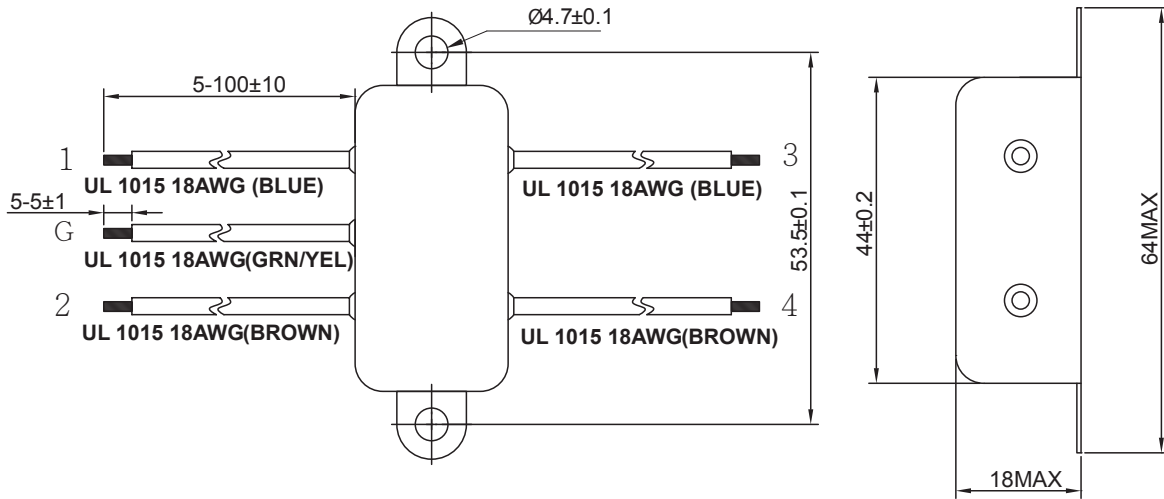
Part No.	Rated Current (A)	Inductance L(mH)	Capacitance CX(μ F)	Capacitance CY(pF)	Output connections
FYK01T1	1	3.7	0.1	3300	Fast-on terminal (optional lead-wire)
FYK03T1	3	1.8	0.1	3300	
FYK06T1	6	0.7	0.1	3300	
FYK10T1	10	0.3	0.1	3300	

Physical Dimensions: (mm)

FYK-T1



FYK-T (Lead-wire)



Typical filter attenuation (Common mode — Normal mode —)

