

1

2

3

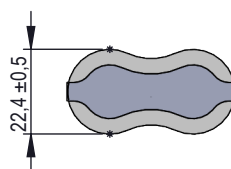
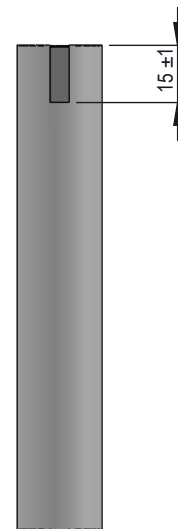
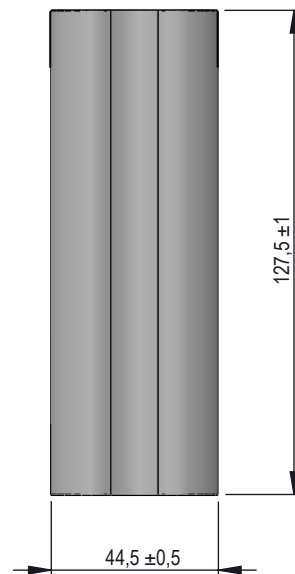
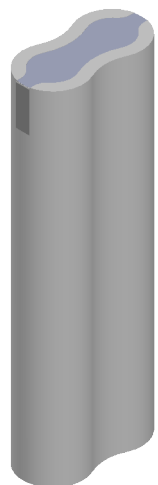
4

5

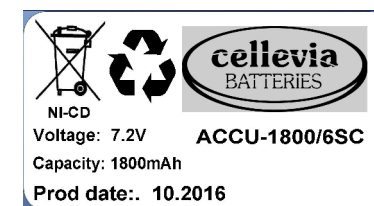
6


Specifications

Nominal Voltage [V]		7.2
Typical capacity [mAh]		1800
Size [mm]		According to the drawing
Typical charge [mA]		170 (16 hrs)
Rapid charge [mA]		1700 (temp. 20 °C)
Standard continuous discharge current [mA]		17000 (temp. 20 °C)
Charge temperature	Typical	0 °C do 50 °C
Discharge temperature	Continous	-20 °C do 60 °C
Storage temperature	Recommended	5 °C do 25 °C



Label 50x30mm



Material/ Materiał:	Scale/ Skala: 1:2	Format/ Format arkusza: A4	Weight/ Masa:	Sheet/ Arkusz: /	Version/ Wersja: _
Finishing/ Wykończenie: _	Date/ Data:				Revision/ Rewizja: _
Designed by/ Konstruował:					ERP system number: 49809
Checked by/ Sprawdził:					
Approved by/ Zatwierdził:					
Update/ Aktualizował: J. Dadacz	Update/ Data aktualizacji:	Date of implementation/ Data wykonania: 2016-11-09	Product reference/ Nazwa: ACCU-1800/6SC VRECS1800 7,20V 1,80Ah cyli	Docum. number/ Nr rysunku:	

1

2

3

4

5

6